



# Caring Communities: Building Resilience in Indigenous communities

MICHELLE VANDEVORD, CASEY GABRIEL, DEVIN NAVEAU, AND LILIA YUMAGULOVA



# Preparing Our Home

**ENABLES INDIGENOUS YOUTH TO REACH THEIR POTENTIAL**

**IN BECOMING EMERGENCY PREPAREDNESS**

**LEADERS IN THEIR COMMUNITIES**

[www.preparingourhome.ca](http://www.preparingourhome.ca)

Uploads PLAY ALL SORT BY

A grid of 24 video thumbnails from a YouTube channel. Each thumbnail includes a small video preview, a title, a duration, and a view count with the time it was posted. The videos are arranged in four rows of six. The titles include names of individuals and program titles like 'Preparing Our Home - Paddle Carving' and 'Preparing Our Home Gathering 2018'.

Thumbnail	Title	Duration	Views	Posted
1	Alyssa McLeod	4:41	122	1 month ago
2	Angelique Belcourt	9:36	35	2 months ago
3	Ashiele Thomas	4:10	30	3 months ago
4	Theresa Mackenzie and Joshua Highway	5:16	71	4 months ago
5	Santana Dreaver	7:23	45	5 months ago
6	Shalyn Pigeon	6:28	32	5 months ago
7	Neebin Prince	5:46	58	6 months ago
8	Brooke Minarik	5:26	57	6 months ago
9	Sheri Lysons	1:57	51	6 months ago
10	Astokomil Smith	3:32	206	6 months ago
11	Preparing Our Home - Paddle Carving	2:51	75	11 months ago
12	Kyle Gloade Millbrook First Nation	2:51	335	11 months ago
13	Paddle Carving	2:57		
14	Outdoor program	7:36		
15	Devin Naveau	3:34		
16	Chris Gareau	5:21		
17	Darlene Yellow Old Woman	7:15	141	1 year ago
18	Dylan Dolha	4:41		
19	Mia Francis	5:32	324	1 year ago
20	Matthew McCorrister	4:36	39	1 year ago
21	Casey Gabriel	11:50	36	1 year ago
22	Amber MacLean-Hawes	12:30	86	1 year ago
23	Marcellina Peltier	3:50	22	1 year ago
24	Alanna Syliboy	6:24	63	1 year ago
25	Michelle Vandevord	7:45	37	1 year ago
26	Preparing Our Home Gathering 2018	7:24	258	1 year ago
27	Preparing Our Home Program video	8:29	146	2 years ago
28	Eric Taylor Curve Lake	3:47	433	3 years ago
29	Casey Gabriel Lilwat	2:07	93	3 years ago
30	Xet'olacw Community School: know your hazards!	2:26	271	3 years ago



# Preparing Our Home leaders

Michelle Vandevord (Day Star  
Woman), Muskoday First  
Nation

Bizhiw nindizhinikaaz (Devin  
Naveau), Mattagami First  
Nation

Casey Gabriel, Lil'wat Nation



# Female Firefighting & Emergency Services

---

Michelle Vandevord, Associate Director, Sask. First Nation Emergency Management.

President, Aboriginal Firefighters Association of Canada (AFAC)



Saving lives



# SFNEM work

Saskatchewan First Nation Emergency Management is committed to delivering quality Fire & Emergency Training and Services. Our mission is to build capacity on-reserve so bands can lead and manage their emergencies as they have planned.

The SFNEM courses and services:

- Structural & Wildland Firefighting courses
- Emergency Management Courses
- Free Firefighting equipment donation program
- Firehall Assessments
- Community Risk Assessments
- Emergency services deployment
- Daycare and Headstart Inspections
- Fire Inspections
- P25 Radio distribution
- Fire Prevention programs and more



AFAC was formed to address existing gaps in fire services of First Nations communities in Canada.

- Create a new organization through Indigenous collaboration – for us, by us.
- Create an Indigenous governed organization whose structure receives sustainable funding to operate and serve FN communities.
- Collaborate with existing Indigenous organizations providing support to FN communities and not accept any existing funding targeted for another Indigenous organization.
- Establish standards and programs that are relevant to FN communities' needs and (through validation) improve community safety.
- Create a national reporting system that will serve improving FN community safety. Strategic goals and objectives are free of political influence.
- Promote Indigenous fire service careers and training.



**PREPARING  
OUR HOME:**  
Stanley Mission  
Saskatchewan



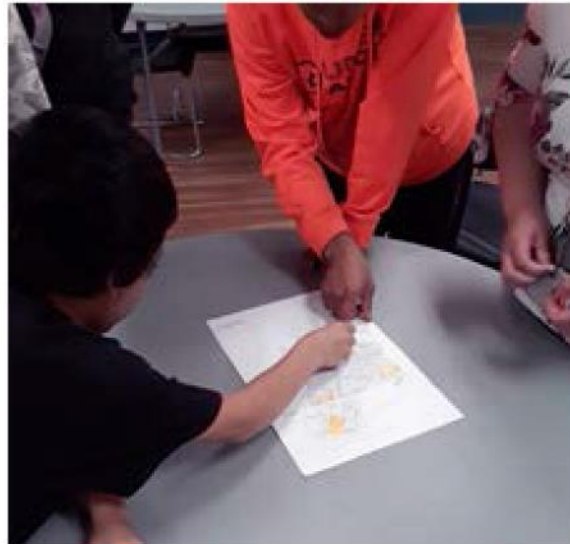


# COMMUNITY ASSET AND HAZARD MAPPING

THE YOUTH PARTICIPATED IN COMMUNITY ASSET MAPPING AND DISCUSSION OF HAZARDS.

## FIRE SAFETY

Fire Safety leader Michelle Vandevord, Manager, Saskatchewan First Nations Emergency Management visited from Prince Albert and taught youth about fire safety.



# TRADITIONAL FOOD PREPARATION

Youth had a lot of fun preparing fish with Colleen.



# RAISING AWARENESS ABOUT FIRE SAFETY: HOW ALL FIRES ARE PREVENTABLE.

By Michelle Vandevord/Manager

Saskatchewan First Nations Emergency Management & Protective Services



# Fire Prevention is Key

We know that fire deaths are 10x higher on-reserve. There are many factors that play into those stats. The work that we do to build capacity means that First Nation Fire Departments can respond with the proper training and equipment. A big part of job is teaching firefighters how to deliver fire prevention programs to the communities they serve. This is a very important part of my job and one that is close to my heart. All fire calls that we attend are preventable. If we can increase awareness of fire hazards in the home and community everyone will be safer and firefighters will respond to less calls. Everyone in the community plays a part in fire safety.

# MATTAGAMI FIRST NATION



- Treaty 9 Territory
- Anishinaabe – Ojibwe/Oji-Cree
- 600 Members
- 250 Residing in the Community



# EMERGENCY MANAGEMENT & PREPAREDNESS

- **Master Emergency Response Plan (MERP)**

- Mitigation
- Preparedness
- Response
- Recovery

- **Mattagami First Nation – Fire Department**

- Fire
- Ice Water Rescue
- Search & Rescue
- Education & Training

- **Mattagami First Nation – Crisis Team**

- Mental Health Support
- Emergency Support



# MASTER EMERGENCY RESPONSE PLAN (MERP)

- **Master Emergency Response Plan & Guide**

- Response
- Recovery & Re-Entry
- Training & Education
- Hazard Identification and Risk Assessment (HIRA)

- **Plans/Guides for:**

- Pandemic
- Environmental Contamination
- Forest Fire
- Rainfall/Flooding
- Major Highway Road Incidents
- Major Windstorms
- Major Blizzards/Ice Storms
- Dangerous Gasses
- Requests for Assistance



# COVID-19 PANDEMIC

- **Activation of Master Emergency Response Plan (Pandemic Influenza Contingency Plan) – March 17, 2020**
- **Chief and Council – Authorize Pandemic Plan activation**
  - Ramp up safety measures
  - Support services to C.C.G./E.M.S.C
- **Community Control Group is activated (MERP)**
- **E.M.S.C. – Eileen Boissoneau**
  - Health Dept
  - Leadership
  - Public Works
  - Crisis team
  - Fire Dept
- **Monitoring station put into effect**
  - Border Lockdown – Gate

**Weekly Updates**

REC: Community Emergency Management During Covid-19  
DATE: Friday, April 10, 2020  
FROM: Emergency Community Control Group (ECCG) | Chief & Council

---

**Color Coding System & Garbage Pickup**

- Color Coding System (check sign) [click here](#)
- Garbage pickup on Mondays & Thursdays between 1pm & 3pm

**Color Coding System & Food Distribution**

For clarification, the **Red Zone** (green paper) is intended to be used if you are unable to obtain food on your own. For example: you used up your weekly trip. It will be mainly used to order and pay at your own expense.

For low income families – if you do not have enough funds, Deltone will assume food supplies from the community. Your sign will be used and you will be notified over Deltone how to use the schedule and include Medison Wheels and make for the check station attendance. Also, a new food order will be in made – slight variations will be needed of the date and pick up times.

**Children Inside The Hut**

The ECCG has been permitted to have a stand for all the check station for the purpose of helping persons during COVID-19. We are asking all community residents to please refrain from having any camp fire in the community during the fire ban and Fire Department maintains an emergency being utilized for the emergency measures and we do not want to risk and those services.

**Self-Isolation**

If a member who resides in Manitowish chooses to leave the community for overnight or longer, Manitowish will not be responsible for your accommodations when you return and you will be required to self-isolate for 14 days. Everyone is encouraged to stay in the community and only leave for essential day trips once per week.

**One Day Trip per Week for Early Household**

Day trips for necessities has been revised to include Hardware (Cabela's), Designated essential shoppers who are social in Thonika, Cognara or Redbury for essential shopping. Remember Only one person per household and vehicle use leave the community for essential shopping. This means no one is to be for Delivery of all Community Residents.

**Social Distancing and Children Playing Out in the Community**

To reduce the risk of COVID-19, it is important parents control their children about social distancing and that they should refrain from playing in groups with other children who do not reside in the same household. Limiting play time to one person social has been possible during this time.

**Hunting and Traditional Medicine Gathering**

Community residents should take precautions to limit day trips if you absolutely need to go out on the land for food and gathering. There has been concerns brought forward regarding social distancing and whether hunters will be practicing social distancing or not. We would like to make decisions on social distancing in groups and that it is **important to continue to follow the social distancing guidelines at all times.**

Those who have made special requests to leave the community to go to their camps for longer than local day trips will be **required to self-isolate for 14 days upon their return.** They are also reminded to practice social distancing while traveling to and from their camps as well as while at their camps.

*\*These measures will remain in effect until further notice, as will be revised as the situation is understood.*

Manitowish Fire Nation Chief and Council would like to re-emphasize all community members that during these unprecedented times, the safety and protection of the community is the highest priority. Working every one a safe, faster weekend it, remember to practice social distancing.

Milgrach for your cooperation.





## IDENTIFYING THE GAPS

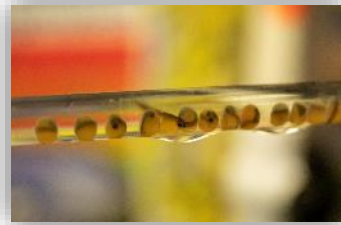
- Working diligently to become a self-sufficient, sustainable and rich community



A word cloud of terms related to climate change and sustainability. The words are arranged in a roughly circular shape. The most prominent words are 'Change', 'Renewable', 'Resilience', 'Climate', 'Water security', 'Plan', 'Food', 'Future', and 'Adaptation'. Other words include 'Traditions', 'Culture', 'Land', 'Energy', 'Learn', 'Health', and 'Adjust'. The colors of the words range from light green to dark blue.

Change  
Renewable  
Resilience  
Climate  
Water security  
Plan  
Food  
Future  
Adaptation  
Traditions  
Culture  
Land  
Energy  
Learn  
Health  
Adjust

# FOOD SECURITY



- Agricultural Initiatives
  - Fruits
  - Vegetables
  - Medicines
  - Community/Backyard gardens
- Fish & Wildlife
  - MFN Fish Hatchery
  - Wildlife Conservation
  - Collaborative Studies
- Food Preservation
- In the event of an emergency
  - Will there be enough food for everyone?
  - Will there be adequate water?

# CLIMATE CHANGE



- Adaptation Strategy
  - Identifying hazards
  - Identifying Impacts
  - Evaluating current conditions
  - How will climate change impact current conditions
  - How do we plan for changing conditions
- Monitoring programs
  - Temperature
  - Precipitation
  - Weather patterns
- Becoming Eco-friendly by Investing in renewable energy and eco-friendly infrastructure
- Conservation and Restoration of existing eco-systems

## LAND & WATER PROTECTION



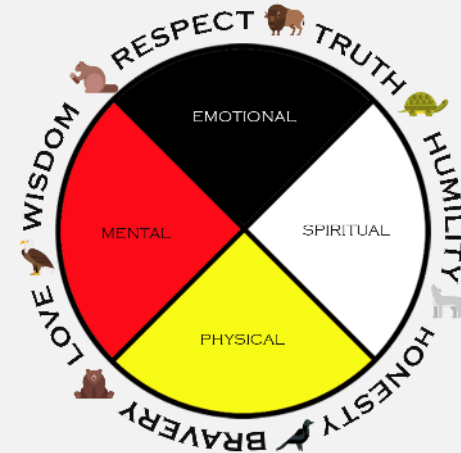
- Adaptation Strategy
  - MERP
  - Reclaiming rolls and responsibilities as stewards of the land
  - Connecting science with traditional knowledge
- Land Protection
  - Minimum 20 km Buffer Zone
  - Asset Mapping
- Water Protection
  - Water monitoring
  - Wetlands protection
- Taking care of our mother
  - Honoring the sacrifices that were made
  - Healing of our people go hand in hand with the healing of our mother

# WORKING TOWARDS A SAFE AND HEALTHY COMMUNITY

Vision: A fair, healthy, competent and prosperous community for today and tomorrows generations.

Mission: A collaborative effort of community to design the future of our community

- A focused effort on:
  - Tradition and Culture
  - Land and Infrastructure
  - Economic Development
  - Inclusivity and Advisory
  - Financial Excellence
  - Policies and Codes
  - Capacity Development





STRENGTH IN UNITY- MIIGWECH

# QUESTIONS



[Devin.Naveau@mattagami.com](mailto:Devin.Naveau@mattagami.com)



(705) 288-0669



Mattagami First Nation ON



# PREPARING OUR HOME:

Lessons from Xetólacw  
Community School,  
Lil'wat Nation



Casey Gabriel, Lil'wat Nation



# Youth-led emergency planning

Mapping, planning, gap  
analysis and action plan  
development

Facebook consultation

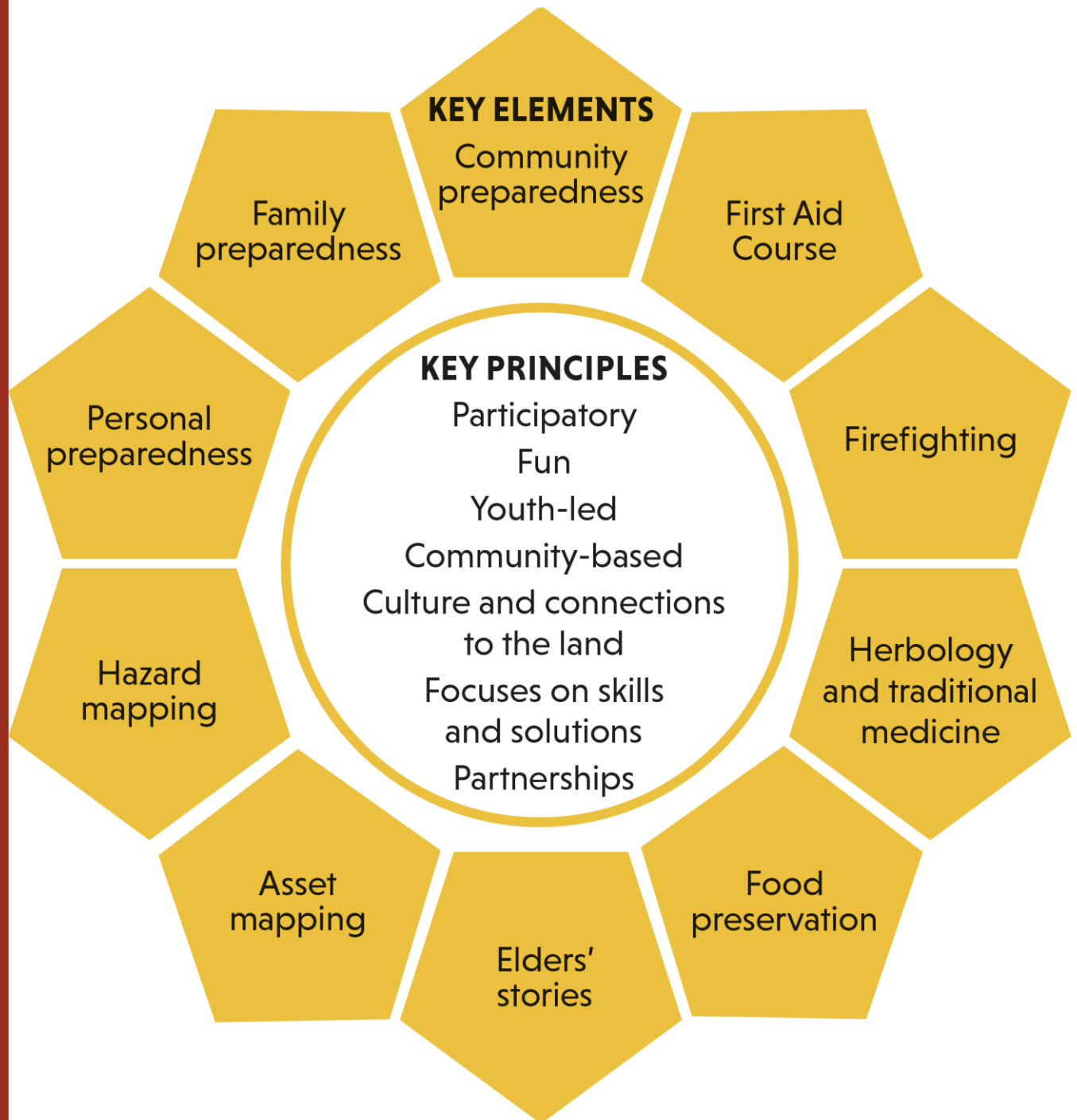
Door-to-door notification  
training

Critical assets and services  
mapping





# Key elements



# Participatory Hazard and Asset Mapping

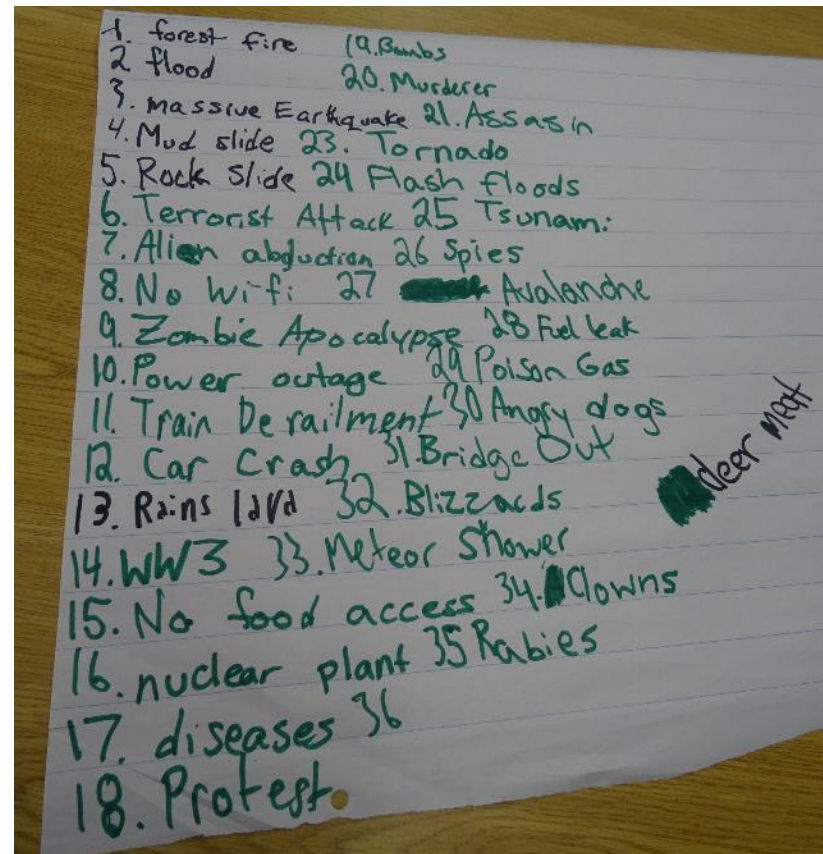
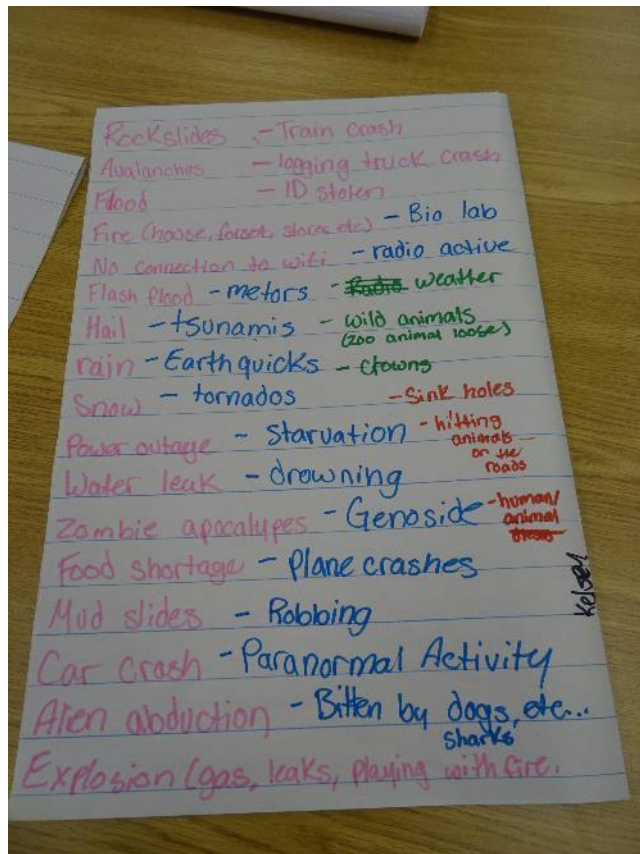




# Xetólacw Community School: Emergency Bins



# Youth-identified hazards (1)





# Structured hazard assessment

Top Hazards:

# 1. Wildfire

# 2. Floods

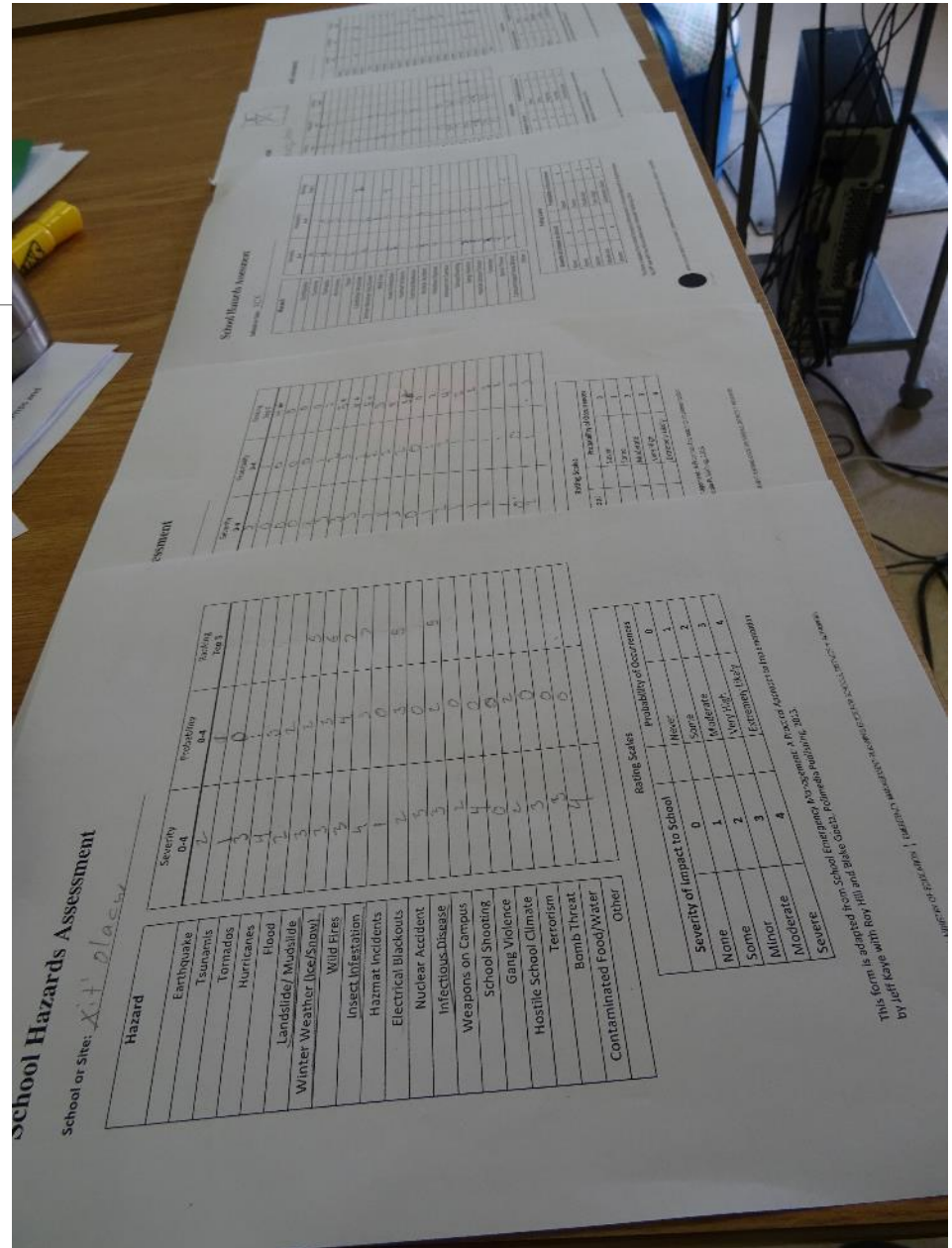
# 3. House fires

# 4. Landslide/rockslide

#5. Power Outage

...

Also no water, contaminated water,  
Drought



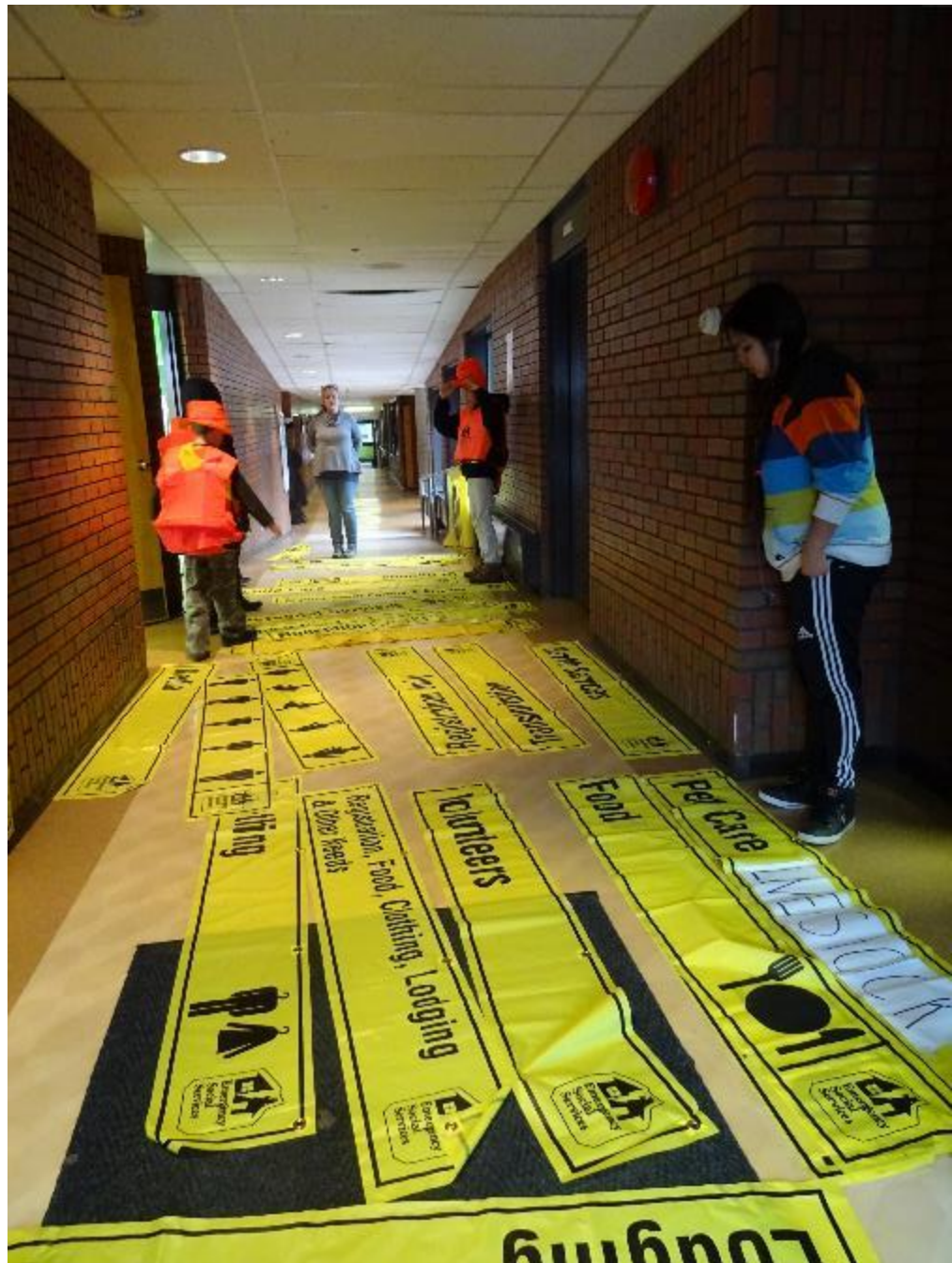
# Enhancing our Emergency Preparedness

ESS and emergency supplies  
at the school need to be  
updated – a designated  
assembly and evacuation  
site

Back-up generators

Secondary access road

...





# Understanding flood hazards

---



# Fire safety boot camp



# First Aid

---



Knowledge put  
to a test

Kúkwstumckacw

Thank you

[www.preparingourhome.ca](http://www.preparingourhome.ca)

